

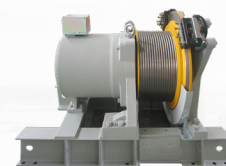
### PMGL MACHINE SERIES

Fujitec engineers and manufactures *Permanent Magnet Gearless (PMGL)* machines that reduce energy consumption with a wide range of applications, flexible installation solutions and improved ride quality. Our highest energy efficient technology meets or exceeds requirements set forth by consultants, engineers and architects for modernization or new installation projects.

## Series Specifications

### PM 02

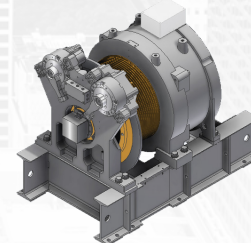
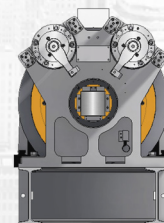
Type	PM Synchronous Motor
Capacity	up to 4,500 lbs
Speed	200 ft/min - 800 ft/min
Roping	2:1   1/2" dia.   Double Wrap
Power	8(kw) - 37(kw)
Brake	Disk Type / Double Brake
Machine Weight	3,500 lbs - 3,900 lbs
*Total Weight	6,700 lbs - 7,100 lbs
Certification	EN81, CSA (C-US), JPN (UCMP)



\*Total Weight = spacer beam assembly, lifting beam assembly, secondary sheave, secondary sheave assembly and secondary sheave beam assembly.

### PM 03

Type	PM Synchronous Motor
Capacity	up to 4,500 lbs
Speed	400 ft/min - 800 ft/min
Roping	2:1   1/2" dia.   Double Wrap
Power	21(kw) - 54(kw)
Brake	Disk Type / Double Brake
Machine Weight	4,000 lbs - 4,600 lbs
*Total Weight	7,300 lbs - 8,200 lbs
Certification	EN81, CSA (C-US), JPN (UCMP)



\*Total Weight = spacer beam assembly, lifting beam assembly, secondary sheave, secondary sheave assembly and secondary sheave beam assembly.

## REDUCE YOUR CARBON FOOTPRINT

Reduce energy consumption by up to **30%** compared to conventional technology by using smaller permanent magnet motors.  
(Approximately 10% energy savings compared to induction AC gearless motor applications.)

# NP

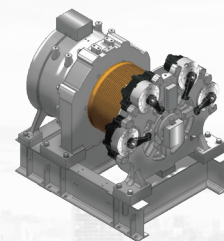
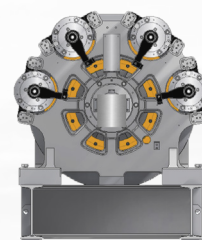
NEW PRODUCT

### PMGL Continued

#### PM 04

Type	PM Synchronous Motor
Capacity	up to 7,000 lbs
Speed	150 ft/min - 1,400 ft/min
Roping	1:1, 2:1   1/2 - 5/8" dia.   Double Wrap
Power	30(kw) - 72(kw)
Brake	Disk Type / 4 Brakes
Machine Weight	6,400 lbs - 9,000 lbs
*Total Weight	10,800 lbs - 14,600 lbs
Certification	EN81, CSA (C-US), JPN (UCMP)

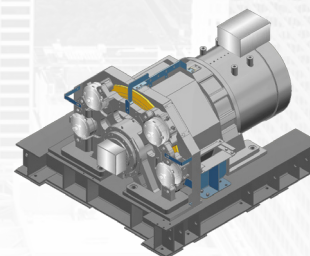
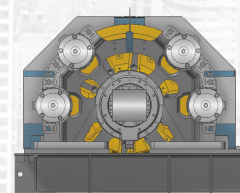
\* Total Weight = spacer beam assembly, lifting beam assembly, secondary sheave, secondary sheave assembly and secondary sheave beam assembly.



#### FM 450

Type	PM Synchronous Motor
Capacity	up to 9,900 lbs
Speed	246 ft/min - 1,574 ft/min
Roping	1:1, 2:1   11/16" dia.   Double Wrap
Power	72(kw) - 122(kw)
Brake	Disk Type / 4 Brakes
Machine Weight	13,500 lbs
*Total Weight	24,000 lbs
Certification	EN81, CSA (C-US), JPN (UCMP)

\* Total Weight = spacer beam assembly, lifting beam assembly, secondary sheave, secondary sheave assembly and secondary sheave beam assembly.





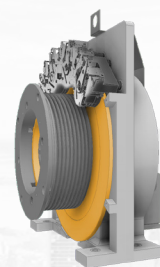
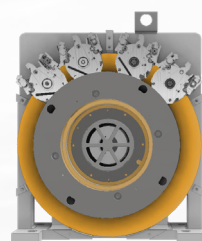
### PMGL FM 55 SERIES

Fujitec engineers and manufactures *Permanent Magnet Gearless (PMGL)* machines that reduce energy consumption with a wide range of applications, flexible installation solutions and improved ride quality. Our highest energy efficient technology meets or exceeds requirements set forth by consultants, engineers and architects for modernization or new installation projects.

## Series Specifications

### FM 55: MRL

Type	PM Synchronous Motor
Capacity	up to 4,500 lbs
Speed	up to 500 ft/min
Roping	2:1   1/2" dia x 6
Power Output	37(kw)
Brake	Disk Type / Double Brake System
Sheave Groove Profile	45" 2V-UC 82" U-UC 97" U-UC
Sheave Shaft Load	11,000 lbs
Certification	EN81, CSA (C-US), JPN (UCMP)



### FM 55: MRX

Type	PM Synchronous Motor
Capacity	up to 4,500 lbs
Speed	up to 500 ft/min
Roping	2:1   1/2" dia x 7 or (3/8" dia x 9)
Power	37(kw)
Brake	Disk Type / Double Brake System
Sheave Groove Profile	45" 2V-UC 82" U-UC 97" U-UC 105" U-UC
Sheave Shaft Load	11,000 lbs
Certification	EN81, CSA (C-US), JPN (UCMP)

Reduce energy consumption by up to **30%** compared to conventional technology by using smaller permanent magnet motors. (Approximately 10% energy savings compared to induction AC gearless motor applications.)