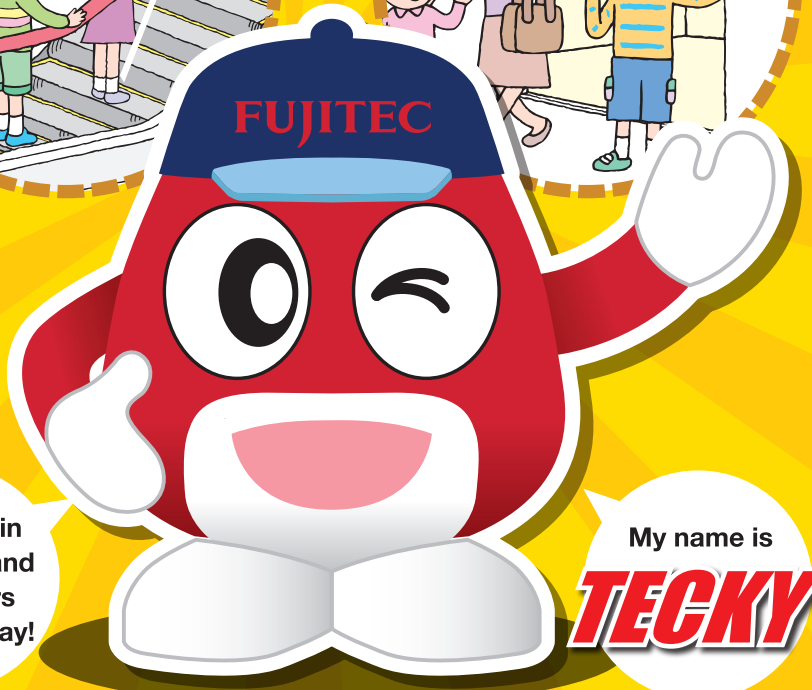


FUJITEC

# Let's ride in elevators and escalators the right way!



Let's ride in  
elevators and  
escalators  
the right way!

My name is

**TECKY**

Name

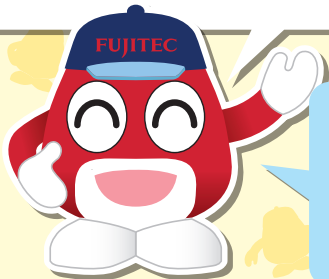
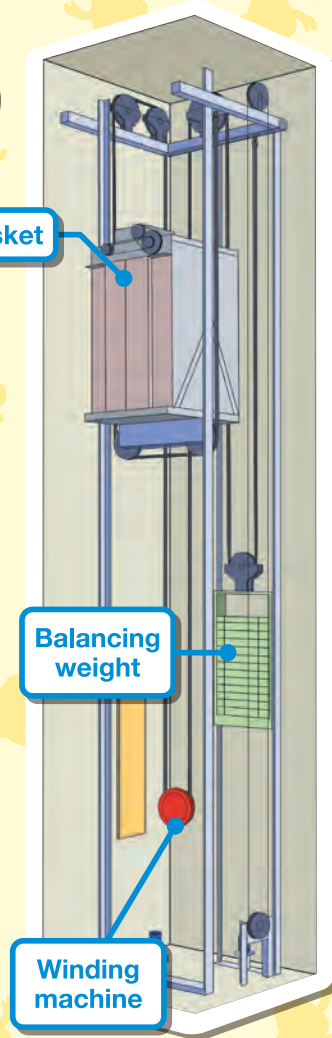
# How Elevators work

Don't elevators ever drop?



**Elevators are designed safely so they won't drop.**

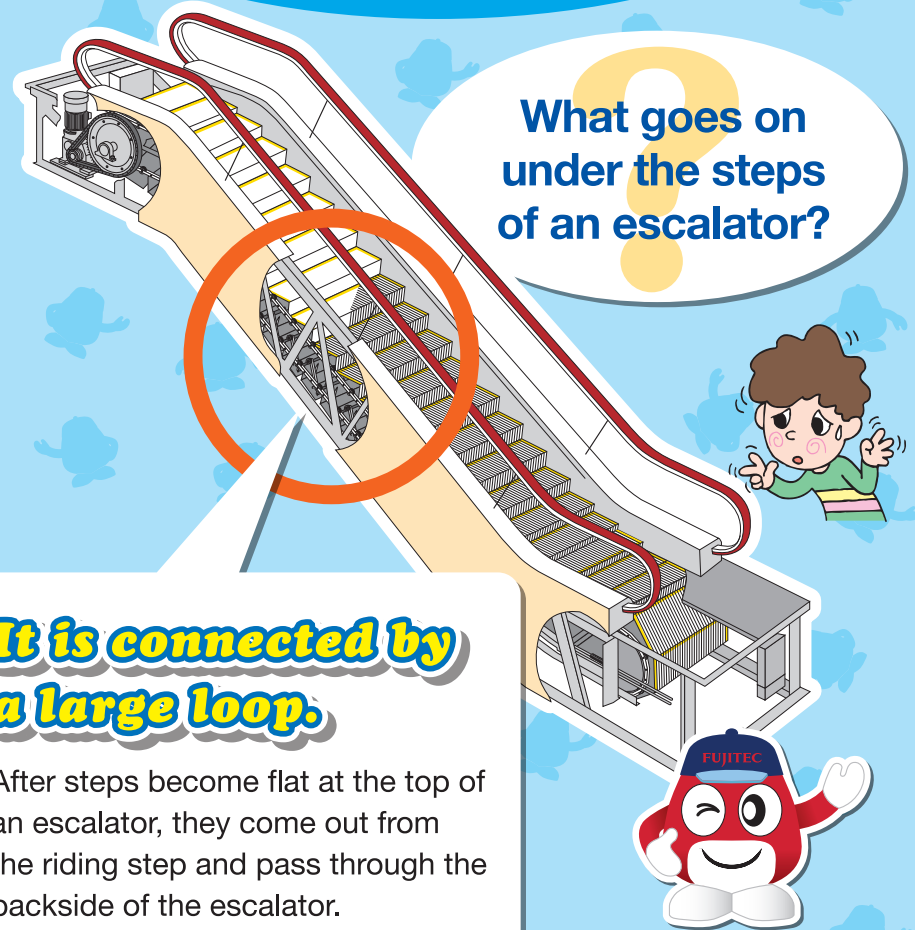
Elevator ropes are made by twisting thin metal wires together. This keeps them from all being cut at the same time. Elevators are safe as they are checked regularly. 3 ropes are used for an ordinary size elevator and 5~8 ropes are used for a large size elevator. Every elevator has an emergency stop. If a rope is cut, an elevator will stop by this device.



An elevator is balanced by a "basket" and "balancing weight" and moved by an electric "winding machine." If the weight is balanced, an elevator can be efficiently moved by smaller force.

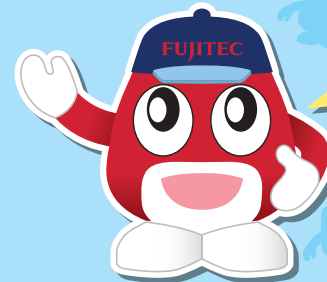
# How Escalators work

What goes on under the steps of an escalator?



**It is connected by a large loop.**

After steps become flat at the top of an escalator, they come out from the riding step and pass through the backside of the escalator.



The steps of an escalator are connected by a chain and differ in structure as they move up. Connected steps move along two rails at the bottom and by the rail position changing, steps become stairs and flatten out.

Let's ride in elevators the right way!

If there is an earthquake or fire!!



**Don't use an elevator if there is an earthquake or fire.**

If there is an earthquake or fire, do not use an elevator. There is a danger that you might get trapped inside.



**Don't panic if there is an earthquake.**

If there is an earthquake when you are in an elevator, press all the buttons calmly. If the doors open, get out of the elevator and use the stairs to leave the building.



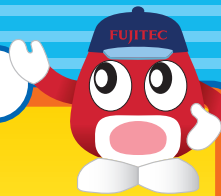
In case of an emergency

**If you are trapped, press the emergency call button!!**



If you are trapped in an elevator because of a power failure, press the emergency call button and wait calmly for rescue.

There are many dangers around the doors!



**Watch out for the doors!**

If you lean against the doors or touch the doors, your hands might get caught.



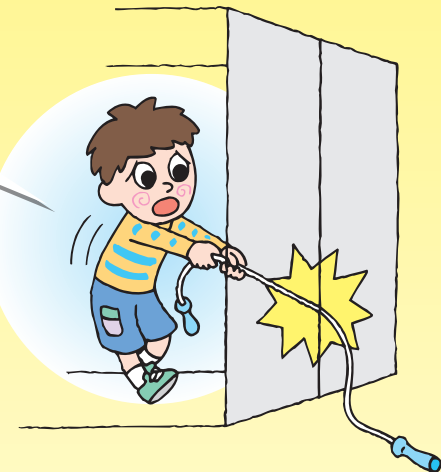
**Don't rush into an elevator!**

It is dangerous to rush into an elevator when the doors are closing. You might be caught by the doors or injured falling down. If you fall into another person, a serious accident might occur.



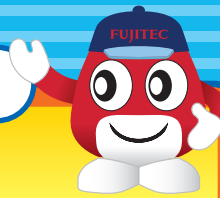
**Be careful with long objects!**

If long objects, for example a pet leash or scarf, are caught in the doors, this could be very dangerous. If an elevator moves while you are caught in the doors, a serious accident might occur.



Let's ride in elevators the right way!

### Request from TECKY



#### Press the button softly.

If you hit the button hard or press it many times, it might cause a malfunction. Press the button once and carefully.



#### Be careful not to drop things!

Be careful about not dropping things between the doors of the elevator and riding zone.



#### Don't forcefully keep the doors open.

If you keep the doors open by stopping the doors with your hand or foot, it might cause a malfunction.



#### Allow only the maximum number of passengers.

If passengers exceed the maximum number, the alarm will go off and the elevator will stop moving. If the alarm goes off, ride in the next elevator.



#### Don't run and jump

If you run and jump in the elevator, this might trigger the safety device to go off and the elevator may suddenly stop and you might be trapped inside.



#### Keep alert to strangers

If there is a suspicious person in the elevator or around the elevator, do not ride in the elevator alone.



Let's ride on escalators the right way!

If there is an earthquake or fire!!

Don't use an escalator if there is an earthquake or fire.

If there is an earthquake or fire, do not use an escalator. You might tumble or fall and there is a chance of serious injury.



Don't get caught!!

Be extra careful about plastic sandals and boots!!

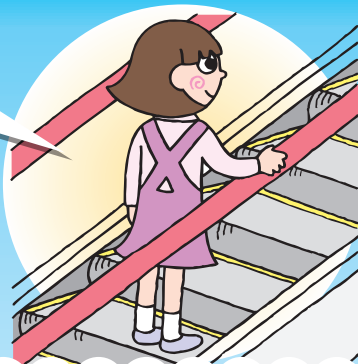
You might get caught between the steps and side and the top of the stairs and steps.



Learn how to ride on an escalator the right way!

Don't walk on an escalator and hold onto the rails and ride.

Escalators are not stairs. Don't walk or run and stop and hold onto the rails and ride.



Ride without sticking your face and hands out!

It is very dangerous to stick your face and hands out of an escalator. A serious accident might occur, such as you will bang your head into the ceiling or you will fall down.



Make sure to ride inside the yellow line!

There is a danger of being caught in the escalator outside of the yellow portion. Make sure to ride inside the yellow line.



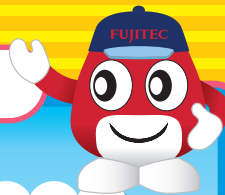
Ride keeping some distance!

Keep some distance from the person in front of you to prevent unexpected accidents.



Let's ride on escalators the right way!

Request from TECKY



**Don't play on the rails.**

Never sit astride a rail or hang off it. Your hands might be caught in the lead-in portion of a rail or you might fall down from a high spot and a serious accident might occur.



**Don't play around the area where people get on and off.**

You will get in the way of other riders and might cause a serious accident. Don't stop or play around the area where people get on and off an escalator.



**Don't lean against an escalator**

If you lean against an escalator, you might tumble or fall. Ride on an escalator standing straight.



**Don't put tipped objects like an umbrella or cane into one of the "grooves."**

You might be hurt or the escalator might malfunction.



**Don't ride a baby carriage or a shopping cart up an escalator.**

A serious accident might occur by tumbling over or falling.



**Be careful wearing wet shoes**

Ride on an escalator by watching your step on rainy days. If the soles of your shoes are wet, you might slip and fall down.



FUJITEC CO.,LTD.

Message from Mr. Uchiyama, President of FUJITEC



## Aiming to make a "safe and secure" city!

Elevators and escalators are each highly public means of transportation. We consider everyone's safety, from little children to elderly people. In case of an emergency, elevators and escalators have many safety devices and FUJITEC has developed many of these safety devices such as sensors for elevator doors that prevent passengers from getting caught and a safety device that prevents shoes from getting caught on escalators. FUJITEC wants to help build a more "safe and secure" city.

We make  
elevators



Big Wing in Hikone City, Shiga, Japan

We make  
escalators



Big Step in Toyooka City, Hyogo, Japan





I am FUJITEC's mascot,  
aiming at "safe and secure"  
products and services!